

Load Balance Broadband Router TL-R470T+



Changeable WAN/LAN ports for flexible network resource allocation¹

Multiple load balance strategies for maximizing total bandwidth

Advanced QoS feature guarantees the requirements of different bandwidth applications



Description:

The TL-R470T+ Load Balance Broadband Router possesses stronger data transmission capacity and stability, cost-efficient for networks in places such as Internet cafes and small offices. It brings you high return on investment with low overhead.

¹ By the factory default, TL-R470T+ is set to work in the dual WAN ports mode: port 1 and port 2 are working as WAN ports, while port 3~5 are LAN ports.

Three Changeable LAN/WAN Ports

The TL-R470T+ features three changeable ports that can be set to either LAN or WAN, allowing the router to support up to four WAN ports to satisfy various Internet access requirements through one device. The router also has an integrated smart load balancing function which automatically selects the most efficient line according to load and bandwidth requirements, providing users with consistent network uptime and reliable Ethernet connectivity.

Superior Performance and High Stability

The router features a network dedicated processor, clocked at 400MHz for powerful processing performance, an internal power supply to allow for long term operation stability, and professional lightning protection design keeps your investments as safe as possible.

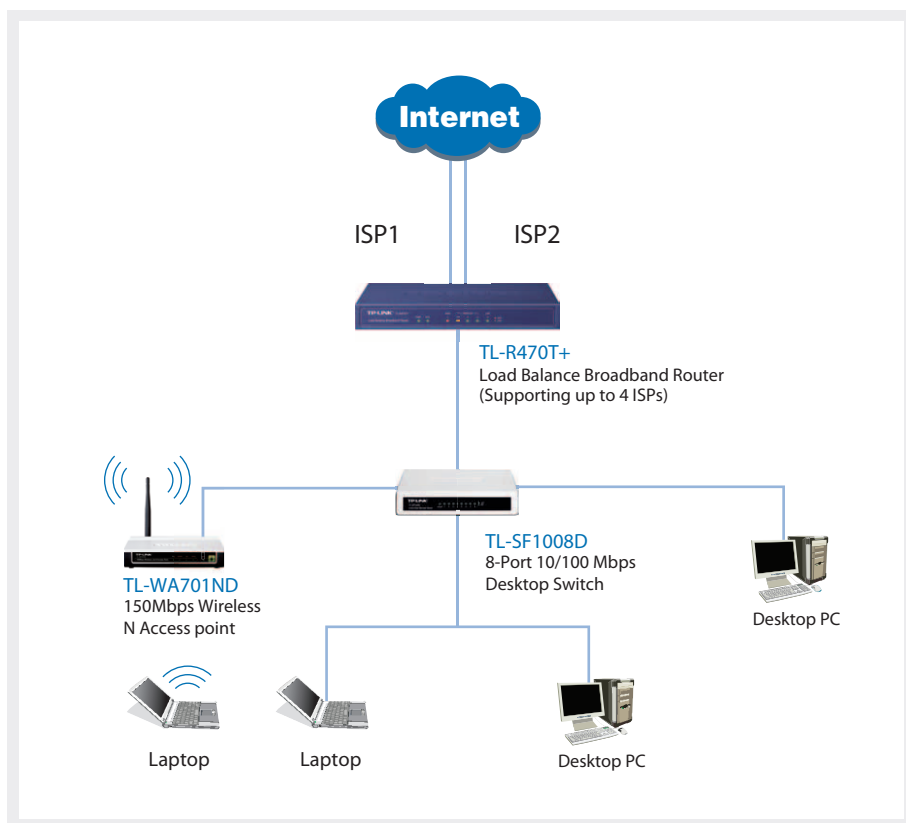
Management for a Fluid Networking Experience

Integrating multiple load balancing strategies, IP and port based bandwidth control, session limit, domain filtering, and IP/MAC address filtering, the TL-R470T+ provides users with a fluid network experience, without lag and connection drops.

Easy to Install and Use

With user-friendly web-based management, remote management and configuration backup & restore functions, the TL-R470T+ provides many comprehensive features that are easy to deploy and maintain, especially for businesses lacking professional IT staff.

Diagram:



Features:

- Dynamic IP, Static IP, PPPoE, L2TP, PPTP and BigPond Cable Internet connection options easily connect to Internet
- Time-based access control allows parents or administrators to establish restricted access policies for children or staff
- IP-based bandwidth control allows administrators to determine how much bandwidth is allotted to each PC which guarantees the performance of VoIP or video applications
- Built-in DHCP server supports static IP address distribution
- Built-in firewall supports IP address filtering, domain name filtering, and MAC address filtering
- IP and MAC binding function effectively prevents ARP virus attacks
- Powerful DoS attack protection safeguards your network
- Virtual Server, Special Application, DMZ Host and UPnP help users build their own servers
- DDNS helps users utilize remote management easily with a domain name

Specifications:

Ports	1 Fixed Ethernet WAN Port 1 Fixed Ethernet LAN Port 3 Changeable Ethernet WAN/LAN Ports
Internet Access	PPPoE, Dynamic IP, Static IP, L2TP, PPTP, BigPond Cable
Multi-WAN Function	WAN Load Balancing Detecting Online
Security	IP Address Filtering MAC Address Filtering Domain Name Filtering DoS Protection
DDNS	Supports DynDNS / PeanutHull / Comexe / No-IP
VPN Pass-through	IPSec, PPTP, L2TP
QoS	IP and Port Based Bandwidth Control Session Limit
Forwarding Rules	Virtual Server Port Triggering DMZ Host UPnP
Management	Web Management Port Mirror Restore & Backup Configuration Remote Web Management
Power Supply	Internal Power Adapter
Certifications	CE, FCC
Temperature	Operating: 0°C~40°C (32°F~104°F) Storage: -40°C~70°C (-40°F~158°F)
Humidity	Operating: 10%~90% RH Non-Condensing Storage: 5%~90% RH Non-Condensing
Dimensions (L*W*H)	209*126*26 mm

Package Contents:

- Load Balance Broadband Router TL-R470T+
- Power cord
- RJ-45 Ethernet Cable
- WAN/LAN Ports Configuration Guide
- Resource CD

Related Products:

- ADSL2+ Modem Router TD-8810
- 8-port 10/100Mbps Desktop Switch TL-SF1008D
- 150Mbps Wireless N Access Point TL-WA701ND



- Details: <http://www.tp-link.com/support/Localesupport.asp>
- German/Austrian/Swiss users are not included